



FOR IMMEDIATE RELEASE

January 7, 2021

Media Contacts:

Lauren Stephens – (202) 465-6112, lauren.stephens@dc.gov

Mariam Nabizad – (202) 359-2678, mariam.nabizad@dc.gov

I-295 Corridor Projects Weekly Temporary Closures January 11 through January 18, 2021

(Washington, DC) – The District Department of Transportation (DDOT) will temporarily close roadways, lanes, ramps and shoulders on the following corridors to perform construction activities along and near the I-295 / DC 295 corridor. The start of these lane, ramp, and shoulder closures is contingent on suitable weather, field conditions, and/or adjacent construction activities.

Single left or right lane closures will also occur daily and nightly on northbound and southbound I-295 between Exit 1 (Laboratory Road / US Naval Research Lab) and I-695. Double left or right lane closures will only occur nightly until the following morning.

Single left or right lane closures will occur daily and nightly on South Capitol Street, SE/SW between Firth Sterling Avenue, SE and N Street, SE and on Suitland Parkway, SE between the Martin Luther King, Jr. Avenue, SE overpass and South Capitol Street, SE. Double left or right lane closures will only occur nightly until the following morning.

Daily and nightly single lane closures will also occur anytime along Firth Sterling Avenue, SE, Potomac Avenue, SE/SW, Half Street, SW, Howard Road, SE, Barry Road, SE, St. Elizabeths Avenue, SE, Malcolm X Avenue, SE, and South Capitol Street, SE/SW.

The following full ramp closures will also occur daily and nightly.

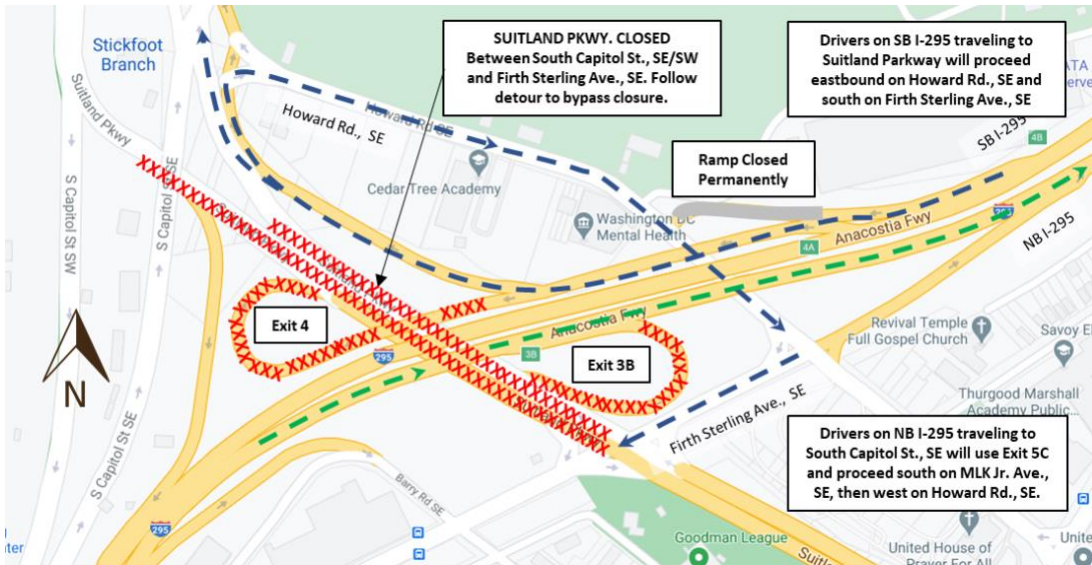
- Exit 3B from I-295 Northbound (South Capitol Street / Nationals Park / Downtown)
- Exit 4 from I-295 Southbound (South Capitol Street / Suitland Parkway)
- I-295 Northbound On-ramp from northbound Firth Sterling Avenue, SE
- Ramp from MLK Jr. Avenue to I-295 Northbound (continuously)

Nightly full closures will occur on Howard Road SE between the WMATA Parking garage and Firth Sterling Avenue, SE and Suitland Parkway, SE between South Capitol Street, SE/SW and Firth Sterling Avenue, SE between Monday, January 11 and Friday, January 15, 2021. These full closures will not occur on the same nights. Only the full closure of Suitland Parkway, SE will continue during the weekend from Friday night, January 15 to Monday morning, January 18, 2021.

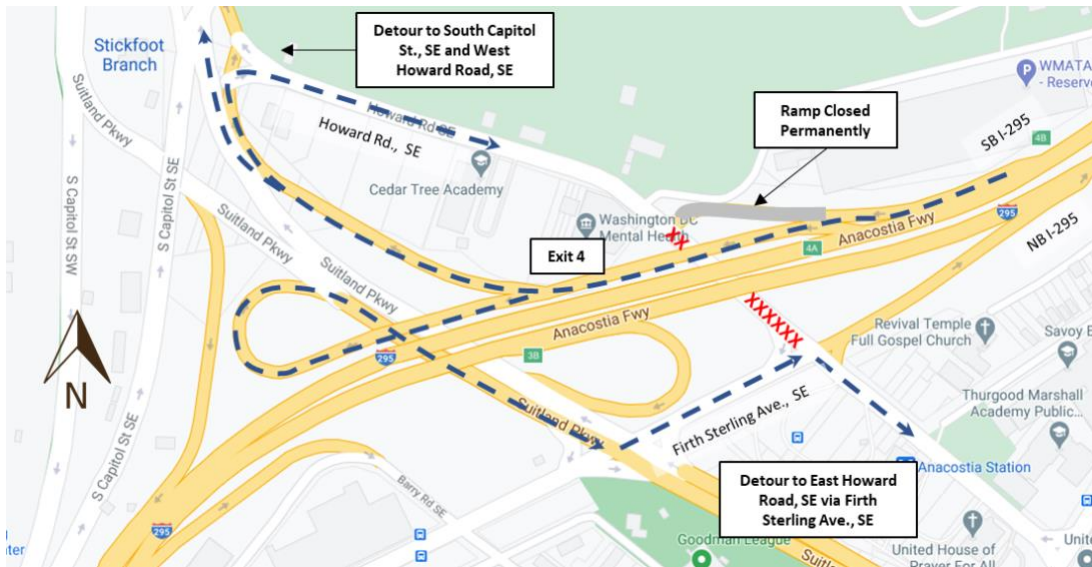
For the closure of Suitland Parkway, the ramps from northbound I-295 (Exit 3B) and southbound I-295 (Exit 4 to Suitland Parkway) will also be closed. The following signed detours will be in place:

- Exit 3B (from I-295 NB) Closure: Take Exit 5C to Martin Luther King Jr. Avenue, SE and follow detour signs to Howard Road, SE and back to Suitland Parkway, SE.
- Exit 4 to Suitland Parkway (from I-295 SB) Closure: Take Exit 4 to Howard Road, SE and follow detour signs to return to Suitland Parkway, SE.

Overnight Suitland Parkway, SE Closure & Detour



Overnight Howard Road, SE Closure & Detour



These closures are required for construction activities associated with the following DDOT projects:

South Capitol Street Corridor Project - Frederick Douglass Memorial Bridge

The South Capitol Street Corridor Project calls for replacing the Frederick Douglass Memorial Bridge and transforming related sections of the urban freeway into a beautiful scenic boulevard that increases pedestrian and vehicular safety, improves multimodal transportation options, increases community accessibility and supports economic development on both sides of the Anacostia River.

I-295 / Malcolm X Avenue SE Interchange Improvement Project

The multiple phases of this project include the reconstruction of the I-295 interchange with Malcolm X Avenue SE, including modified ramps and a new access roadway to the St. Elizabeth’s West Campus. The planned improvements will be made between Firth Sterling Avenue SE, on the north, and the South Capitol Street/Martin Luther King, Jr. Avenue SE intersection to the south. The project will provide transportation improvements to serve the proposed Department of Homeland Security headquarters consolidation on the St. Elizabeth’s West Campus.

###

For more information about DDOT’s ongoing efforts to improve the 295 corridor, visit <http://www.improving295dc.com>.

The mission of the District Department of Transportation (DDOT) is to enhance the quality of life for District residents and visitors by ensuring that people, goods, and information move efficiently and safely with minimal adverse impact on residents and the environment.

Follow us on [Twitter](#) for transportation-related updates and more; like us on [Facebook](#) and visit the website at www.ddot.dc.gov. Visit goDCgo.com for more information on transportation options in the District.