



FOR IMMEDIATE RELEASE

June 11, 2020

Media Contacts:

Lauren Stephens - (202) 465-6112, lauren.stephens@dc.gov

Temporary Closures of Suitland Parkway, SE

June 15, 2020 through June 21, 2020

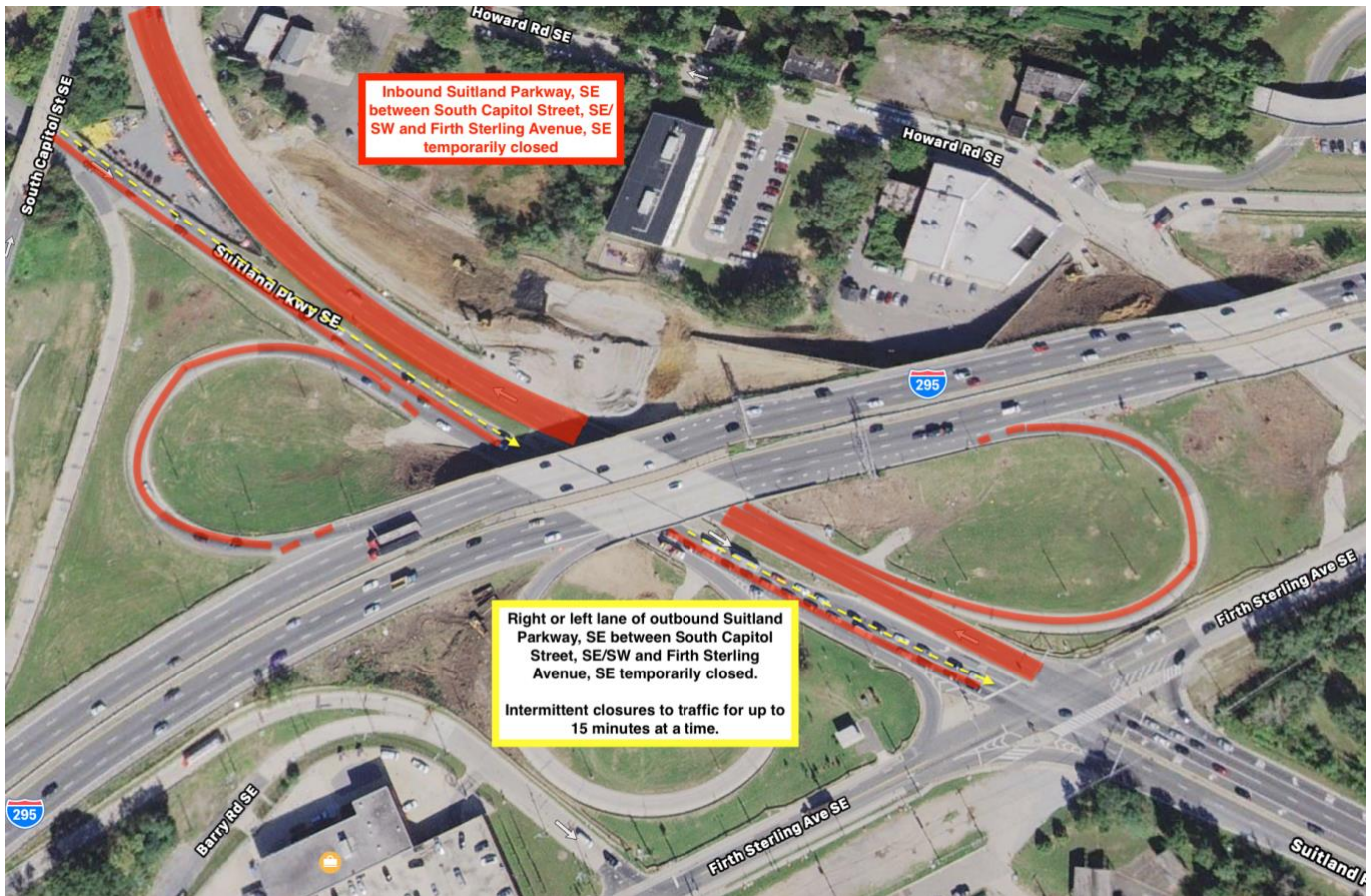
Weeknights 8:00 PM to 5:00 AM

Saturdays 5:00 AM to 7:00 PM

(Washington, D.C.) The District Department of Transportation (DDOT) will temporarily close the following:

- Westbound Suitland Parkway, SE between South Capitol Street, SE/SW and Firth Sterling Avenue, SE
- Eastbound Suitland Parkway, SE will also experience intermittent closures of up to 15 minutes at a time with left or right lanes closed between South Capitol Street, SE/SW and Firth Sterling Avenue, SE.

These closures will take place during weeknights from 8:00 pm to 5:00 am the following morning and Saturday from 5:00 am to 7:00 pm. These closures will occur on or about Monday, June 15, 2020 through Sunday, June 21, 2020 for bridge demolition, as shown in the below graphic. In the event of weather or other unforeseen delays the Saturday closure will occur on the Sunday following the scheduled closure. A marked detour will be in place during these closures.



Suitland Parkway, SE Closures

These closures are necessary for construction activities associated with the South Capitol Street Corridor Project which includes construction of the New Frederick Douglass Memorial Bridge and the reconstruction of the I-295/ Suitland Parkway interchange.

For more information about DDOT's ongoing efforts to improve the 295 corridor, visit www.improving295dc.com.

The mission of the District Department of Transportation (DDOT) is to enhance the quality of life for District residents and visitors by ensuring that people, goods, and information move efficiently and safely with minimal adverse impact on residents and the environment.

Follow us on [Twitter](#) for transportation-related updates and more; like us on [Facebook](#) and visit the website at www.ddot.dc.gov. Visit goDCgo.com for more information on transportation options in the District.